

907, 911, and 913 Series Pedestal Convectors

IMPORTANT INSTRUCTIONS



WARNING



Read Carefully – These instructions are written to help you prevent difficulties that might arise during installation of these Pedestal Heaters. Studying these instructions first may save you considerable time and money later. These Pedestal Heaters are designed for easy and economical installation. Follow these instructions to keep your installation time to a minimum.

1. Read all instructions before using the heater.
2. **Hazard of fire or electric shock** – To avoid possible electrical shock, be sure electricity is turned off at main switch first before wiring. All wiring must be in accordance with the National Electrical Code (NEC) applicable local codes and the entire heater installation must be grounded as a precaution against possible electrical shock.
3. Check the supply voltage to make sure it is the same as indicated on the heater nameplate before energizing.
4. Do not install heaters against combustible low-density cellulose fiberboard surfaces.
5. Due to variations in vinyl compositions and their potential to discolor, the use of stand off brackets (BIB-VVSO1 and BIB-VVSO2) and / or specifying a lower watt density unit may be required when installing on vinyl wall coverings or under vinyl window

- dressings.
 6. The ends of the heater must be fully closed by the use of adjoining heaters, end caps, or other accessories.
 7. Do not locate the heater below an electrical convenience receptacle.
 8. A heater has hot and arcing or sparking parts inside. Do not use it in areas where gasoline, paint, or flammable liquids are used or stored. Do not install this heater upside down or where water is present.
 9. This heater is hot when in use. To avoid burns, do not let bare skin touch hot surfaces. Keep combustible materials, such as furniture, pillows, bedding, papers, clothes, and curtains away from heater.
 10. To prevent possible fire, do not block air intakes or exhaust in any manner.
 11. Do not insert or allow foreign objects to enter any ventilation or exhaust opening as this may cause an electric shock or fire, or damage the heater.
 12. Discard packing pads before heater is used.
- See also additional warnings located in this manual

SAVE THESE INSTRUCTIONS

SPECIFICATIONS

Table A

907, 911 Series (H=5-1/2"; D=3")						
Length "L"	Watts per ft.	Total Watts	Amperage			
			120V	208V	240V	277V
28"	125	250	2.4	1.2	1.0	0.9
	188	375	3.1	1.8	1.6	1.4
	250	500	4.2	2.4	2.1	1.8
3'	125	375	3.1	1.8	1.6	1.4
	188	564	4.7	2.7	2.4	2.0
	250	750	6.2	3.6	3.1	2.7
	250	750	6.2	3.6	3.1	2.7
4'	125	500	4.2	2.4	2.1	1.8
	188	750	6.2	3.6	3.1	2.7
	250	1000	8.3	4.8	4.2	3.6
5'	125	625	5.2	3.0	2.6	2.2
	188	940	7.8	4.5	3.9	3.4
	250	1250	10.4	6.0	5.2	4.5
6'	125	750	6.2	3.6	3.1	2.7
	188	1125	9.4	5.4	4.7	4.1
	250	1500	12.5	7.2	6.2	5.4
8'	125	1000	-	4.8	4.2	3.6
	188	1500	-	7.2	6.2	5.4
	250	2000	-	9.6	8.3	7.2
10'	125	1250	-	6.0	5.2	4.5
	188	1875	-	9.0	7.8	6.7
	250	2500	-	12.0	10.4	9.0

913 Series (H=7"; D=5")							
Length "L"	Watts per ft.	Total Watts	Amperage				
			208V		240V		277V
			1Ø	3Ø	1Ø	3Ø	1Ø
28"	125	250	1.2	-	1.0	-	0.9
	188	375	1.8	-	1.6	-	1.4
	250	500	2.4	-	2.1	-	1.8
	375	750	3.6	-	3.1	-	2.7
	500	1000	4.8	-	4.2	-	3.6
	564	1125	5.4	3.1	4.7	2.7	4.0
	625	1250	6.0	3.5	5.2	3.0	4.5
3'	125	375	1.8	-	1.6	-	1.4
	188	564	2.7	-	2.4	-	2.0
	250	750	3.6	-	3.1	-	2.7
	375	1125	5.4	-	4.7	-	4.0
	500	1500	7.2	-	6.2	-	5.4
	564	1690	8.1	4.7	7.4	4.3	6.1
	625	1875	9.0	5.2	7.8	4.5	6.7
750	750	2250	11.0	6.5	9.4	5.4	8.1

Table A (continued)

913 Series (H=7"; D=5") (Cont.)							
Length "L"	Watts per ft.	Total Watts	Amperage				
			208V		240V		277V
			1Ø	3Ø	1Ø	3Ø	1Ø
4'	125	500	2.4	-	2.1	-	1.8
	188	750	3.6	-	3.1	-	2.7
	250	1000	4.8	-	4.2	-	3.6
	375	1500	7.2	-	6.2	-	5.4
	500	2000	9.6	-	8.3	-	7.2
	564	2250	10.8	6.2	9.4	5.4	8.0
	625	2500	12.0	6.9	10.4	6.2	9.0
5'	750	3000	14.4	8.3	12.5	7.2	10.8
	125	625	3.0	-	2.6	-	2.2
	188	940	4.5	-	3.9	-	3.4
	250	1250	6.0	-	5.2	-	4.5
	375	1875	9.0	-	7.8	-	6.7
	500	2500	12.0	-	10.4	-	9.0
	564	2820	13.5	7.8	11.8	6.8	10.2
6'	625	3125	15.0	8.6	13.0	7.5	11.3
	750	3750	18.0	10.4	15.6	9.0	13.5
	125	750	3.6	-	3.1	-	2.7
	188	1125	5.4	-	4.7	-	4.0
	250	1500	7.2	-	6.2	-	5.4
	375	2250	10.8	-	9.4	-	8.1
	500	3000	14.4	-	12.5	-	10.8
8'	564	3380	16.2	9.4	14.1	8.1	12.2
	625	3750	18.0	10.4	15.6	9.3	13.5
	750	4500	21.6	12.5	18.7	10.8	16.2
	125	1000	4.8	-	4.2	-	3.6
	188	1500	7.2	-	6.2	-	5.4
	250	2000	9.6	-	8.3	-	7.2
	375	3000	14.4	-	12.5	-	10.8
10'	500	4000	19.2	-	16.7	-	14.4
	564	4500	21.6	12.5	18.7	10.8	16.2
	625	5000	24.0	13.9	20.8	12.4	18.0
	750	6000	28.6	16.5	25.0	14.4	21.6
	125	1250	6.0	-	5.2	-	4.5
	188	1875	9.0	-	7.8	-	6.7
	250	2500	12.0	-	10.4	-	9.0
10'	375	3750	18.0	-	15.6	-	13.5
	500	4500	24.0	-	20.8	-	18.0
	564	5640	27.2	15.7	23.5	13.6	20.4
	625	6250	30.0	17.4	26.0	15.0	22.6
	750	7500	36.6	20.8	31.3	18.1	27.0

INSTALLATION

⚠ WARNING ⚠

- Warning-**To reduce the risk of fire, electric shock and damage to property, read, understand and follow the below special instructions:
- All wiring procedures and connections must be in accordance with the National Electrical Code (NEC) and local codes.
 - Do not install heaters against combustible low-density cellulose fiberboard surfaces.
 - Do not install heaters below electrical convenience receptacles (outlets).
 - To reduce the risk of fire, do not store or use gasoline or other flammable vapors or liquids in the vicinity of the heater.
 - CAUTION-** Heater operates at High Temperatures. Keep Electrical Cords, Drapes and Other Furnishings Away From Heater. Maintain a minimum of 4 inches (102 mm) clearance from all exposed heater surfaces (top and front) at all times.

Rough-in Wiring

1. Branch circuits for the heaters shall be enclosed in 1" rigid conduit for 05A heaters, or 1-1/4" rigid conduit for 07A heaters.
2. Run branch circuit of proper voltage and wire size, in rigid conduit, to location of left or right junction box as indicated on heater wiring diagram. Wire entry to heater is through either end pedestal.

Note When pedestal is not used for wire entry, pedestal base must be covered with cover plate (supplied with pedestal). See Figure 2.

3. When installing heaters on existing floors, the threaded end of the rigid conduit must extend 7/8" to 1" above finished concrete. Conduit must be threaded a minimum of 3/8".
4. Basic heaters are prewired and can be connected to branch circuit at either end. Heaters with controls are prewired for connection to branch circuit at one end only (refer to heater wiring diagram), however, heater can be wired from opposite end by running wires through heater wireway.
5. If it is necessary to run wires through the heater wire way, use Table B to size the field installed wiring.
6. The factory installed wires in the heater wireway can be loaded up to 35 amps in 05A units and up to 45 amps in 07A units. Refer to Table C and D for maximum length of heater run when the heaters are connected in parallel.

CAUTION

IF THE FACTORY INSTALLED WIRES IN THE WIREWAY ARE USED TO CONNECT THE BUILT-IN CONTROLS, LIMIT THE MAXIMUM CURRENT TO THE VALUES LISTED

Thermostat 24 amps @ 120-240 VAC
 22 amps @ 277 VAC
 Pilot duty— 125 VAC (all voltages)

Transformer relay
 907 and 911 Series: 22 amps @ 120-240 VAC
 19 amps @ 277 VAC
 913 Series: 25 AMPS @ 120-240 VAC
 22 AMPS @ 277 VAC

Power relay 25 amps @ 120-277 VAC- see wiring diagram on heater

Disconnect switch 20 amps @ 120-277 VAC

Table B. Sizing Field Installed Wiring

Copper wire size 75° C	Maximum no. of wires in wireway	Maximum allowable current		
		Up to 3 Conductors	4 to 6 Conductors	7 thru 9 Conductors
No. 12 AWG	9	11.5 amps	9.3 amps	8.1 amps
No. 10 AWG	8	17.4 amps	14.0 amps	12.1 amps
No. 8 AWG	4	24.0 amps	21.0 amps	—

Table C. Maximum Length of Heater Run (907 and 911-1Ø)

Watts/Ft. of the heaters	Maximum allowable length of heater run (feet)			
	120 Volts	208 Volts	240 Volts	277 Volts
125	33	58	67	77
188	22	38	44	51
250	16	29	33	38

Note: For mix of watt densities, calculate amp draw. Do not exceed values indicated in step 6 above.

TABLE D. Maximum Length of Heater Run (913 - 1Ø and 3Ø)

Watts/Ft. of the Heaters	Maximum Allowable Length of Heater Run (Feet)				
	208 Volts 1Ø	208 Volts 3Ø	240 Volts 1Ø	240 Volts 3Ø	277 Volts 1Ø
125	74	-	86	-	99
188	49	-	57	-	66
250	37	-	43	-	49
376	24	-	28	-	33
500	18	-	21	-	24
564	16	27	19	32	22
625	14	24	17	29	19
750	12	20	14	24	16

7. Standard 75°C wiring must be used in junction boxes, wireway and blank sections.

Room Layout

Refer to heating plans for exact room arrangements of heaters (with or without thermostat and/or relays and/or switches and accessories.)

Mounting Height

Refer to Figure 1a. for typical mounting of heaters and pedestals embedded in floor; refer to Figure 1b. for surface-mounted heaters and pedestals.

Note: Up to 3/4" thick floor covering, such as carpet, tiles, linoleum, etc., may be installed around and under the heater.

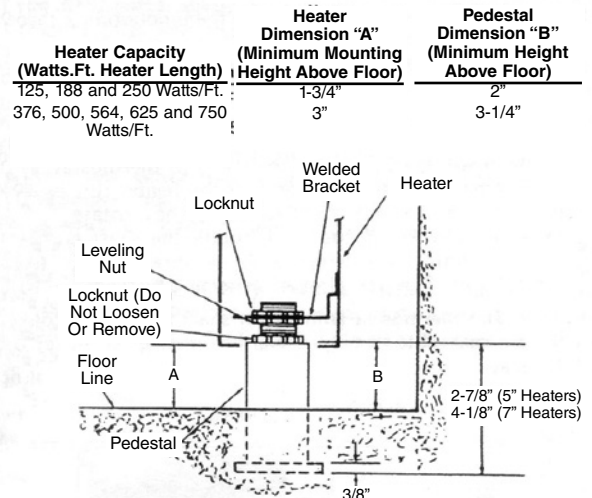


Figure 1a. Pedestal Embedded in Floor

Heater Catalog Number	Height Above Floor (Dim. "A")	
	Min.	Max.
907 and 911	2-5/8"	3-3/8"
913	3-7/8"	4-5/8"

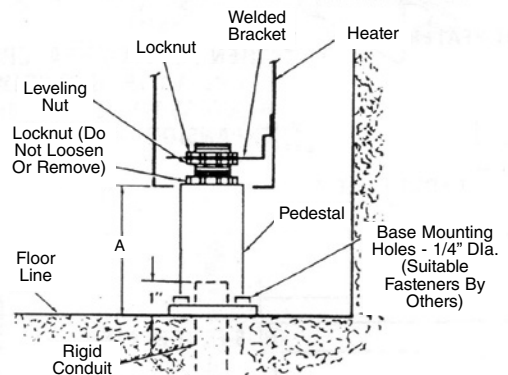


Figure 1b. Surface-Mounted Pedestal

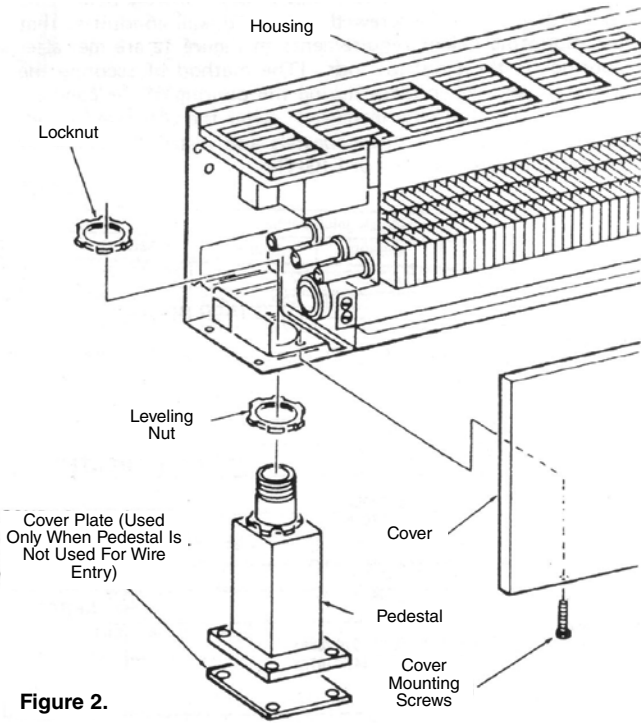
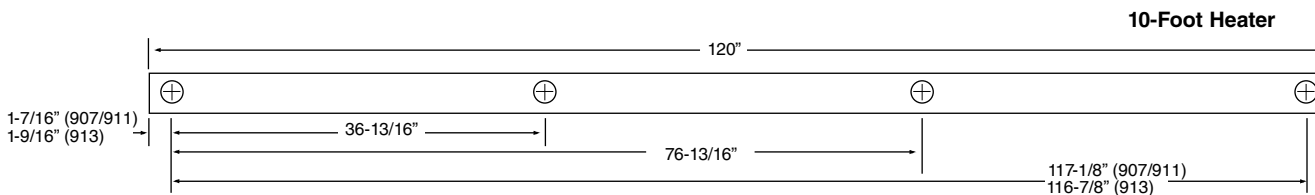
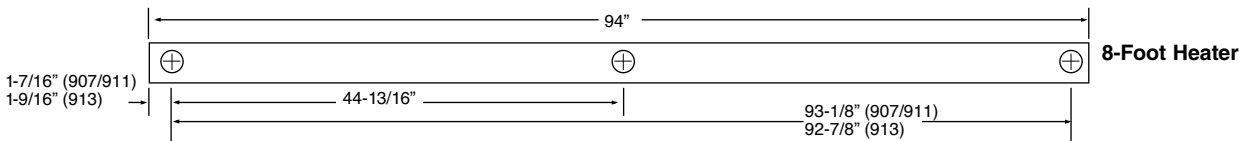
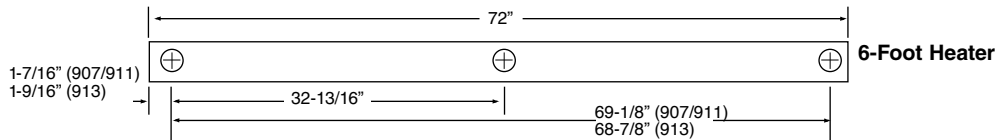
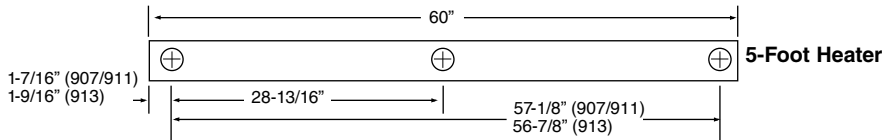
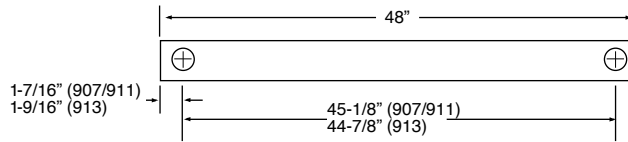
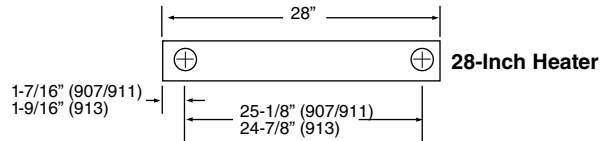
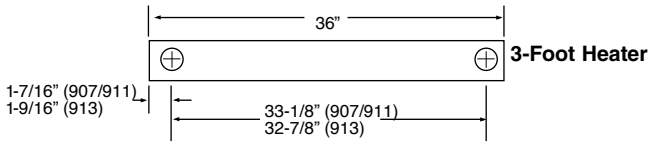
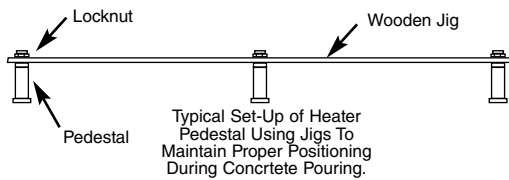
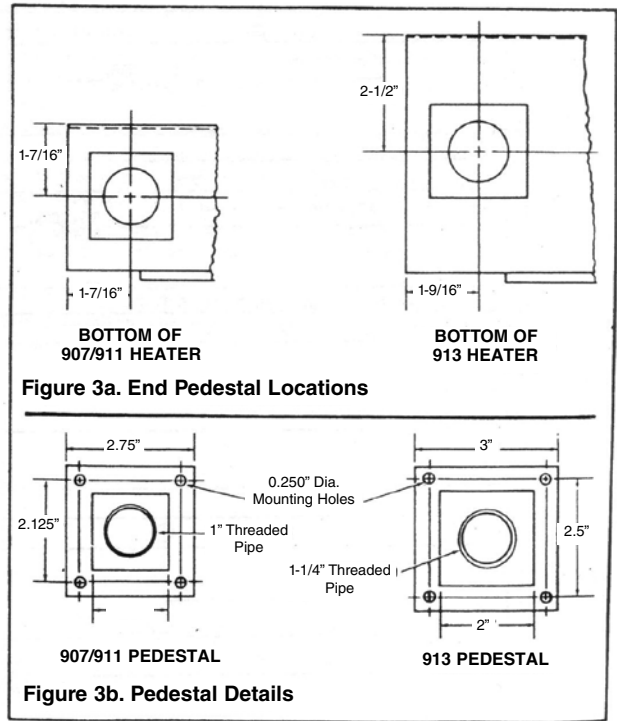


Figure 2.



NOTE: HOLES IN JIGS SHOULD BE 1-3/8" FOR 907/911 HEATERS, OR 1-11/16" FOR 913 HEATERS.

*** WHEN BUTTING HEATERS, LEAVE A 1/16" GAP BETWEEN HEATERS TO ALLOW FOR EXPANSION.**

Figure 4.

Pedestal Installation (Surface-Mounted to Existing Floor)

Note: For ease of installation, it is important that the sequence of operations indicated below be followed in order.

1. Remove front cover by removing mounting screws (Fig. 2)
2. Remove the top lock nut and the leveling nut from each pedestal. (Do not loosen or remove the bottom lock nut.)
3. Screw one pedestal onto threaded rigid conduit protruding from floor.
4. Install remaining pedestal(s) in heater and secure by installing lock nut finger tight.
5. Install heater onto the pedestal which is screwed on the rigid conduit. Position heater in desired location and mark pedestal mounting hole locations on floor. Then remove the heater and the one pedestal from the rigid conduit. Remove the remaining pedestal(s) from the heater.
6. Drill holes in floor (Fig. 3b) and install threaded inserts (or equivalent for 1/4" mounting bolts (inserts and bolts supplied by installer.)
7. Reinstall the one pedestal on the rigid conduit, then secure all other pedestals (with cover plates) to the floor with four 1/4" bolts through each pedestal flange.

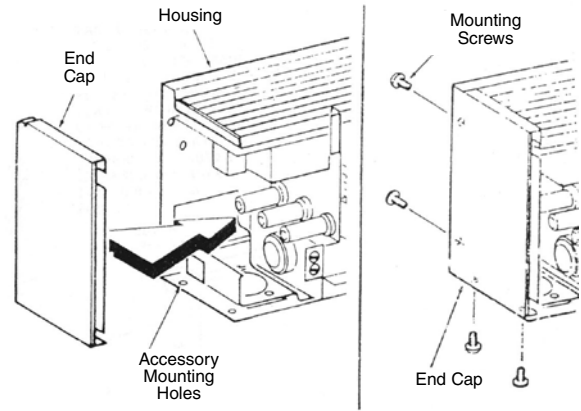
Pedestal Installation (Embedded in New Concrete Floor)

When a heater installation is to be embedded in a new concrete floor, the pedestals are first installed in the concrete, then the heater installed after the concrete has set. It is imperative that the pedestals be installed in perfect alignment so that the holes in order to achieve the required alignment, it is recommended that the pedestals be held in place by the use of jigs during the concrete pour. The jigs should be constructed of good quality 1" x 4" lumber as shown in Figure 4. The pedestals are installed in the jigs and then positioned for the concrete pour. One end pedestal must be screwed onto rigid wall conduit so that the mounting height requirements in Figure 1a are met after pouring of the finished floor. (The method of securing the pedestals and jigs in place during the pouring of the concrete is at the option of the installer.) After the concrete has set, remove the jigs from the pedestals and install the heater as indicated in steps Seven or Eight.

Installation of Single Unit

Note: For ease of installation, it is important that the sequence of operations below be followed in order.

1. Remove front cover by removing mounting screws (Fig. 2)
2. Install end caps (must be purchased separately) on both ends of the heater housing. Refer to Figure 5 (907, 911, and 913 series) for details of end cap installation.
3. Install leveling nut on each installed pedestal, then position heater on pedestals. Adjust the leveling nuts until the heater is level and at the desired mounting height. Then install and tighten the pedestal lock nuts.
4. Run proper size branch circuit to the junction box through the appropriate end pedestal.
5. Following the wiring diagram secured to the heater, make electrical connections.
6. Replace front cover and secure with mounting screws. (See Figure 2.)
7. If the heater is equipped with a built-in thermostat, adjust the shaft to the mid-range and let the heater run for a few hours.



End Cap Data

Description	Heater Catalog Number	
	911 Series	913 Series
End Cap Left	BIC-D5PECL (R)	BIC-D7PECL (R)
End Cap Right	BIC-D5PECR (R)	BIC-D7PECR (R)

(R) Suffix on catalog number refers to accessories with 120 VAC receptacle.

Figure 5. (907, 911, and 913 Series Only)

If the room temperature is too hot, rotate the shaft counter-clockwise; if too cool, rotate the shaft clockwise until a comfortable temperature is obtained. Let room temperature stabilize after each setting change.

Note: The thermostat adjustment shaft and the disconnect switch are accessible through the grille openings at the left end of the heater.

Installation of Multiple Units

Note: For ease of installation, it is important that the sequence of operations indicated below be followed in order.

1. Remove front cover by removing mounting screws (Figure 2.)
2. Install end caps on the outer end of the first and last heater (or blank section) in a run using four No. 6 screws supplied with end caps. (Refer to Figure 5a or 5b for details of end cap installation.)
3. Run proper size branch circuit to the junction box through heaters and blank sections (if applicable) on pedestals.
4. Adjust the leveling nuts until the heaters are level and at the desired mounting height. Then install and tighten the pedestal lock nuts.

CAUTION ⚠

DO NOT OPERATE THE HEATERS UNLESS THE OUTER END OF THE LAST HEATERS (OR BLANK SECTIONS) IN THE RUN ARE CLOSED WITH END CAPS.

Note: 75°C field wiring may be run through the blank section wireway.

- Following the wiring diagram secured to the heater, make the electrical connections. Refer to Figure 7 to connect the other heaters in parallel. Grounding of the other heaters is accomplished by connecting a jumper wire (not supplied) between the two adjacent heaters.
- Replace front covers, and secure with mounting screws. (Figure 2.)
- If the heaters are equipped with built-in thermostat, adjust the shaft to the mid-range and let the heaters run for a few hours. If the room temperature is too hot, rotate the shaft counter-clockwise; if too cool, rotate the shaft clockwise until a comfortable temperature is obtained. Let room temperature stabilize after each setting change.

Note: The thermostat adjustment shaft and the disconnect switch are accessible through the grille openings at the left end of the heater.

OPERATION

- This heater must be properly installed before it is used.
- If the heater is equipped with a built-in thermostat, adjust the shaft to the mid-range and let the heater run for a few hours. If the room temperature is too hot, rotate the shaft counter-clockwise; if too cool, rotate the shaft clockwise until a comfortable temperature is obtained. Let room temperature stabilize after each setting change. The heater will automatically cycle around this set point on the thermostat.

Note: If a thermostat or disconnect switch is provided in the heater, these components are accessible through the grille openings at the left or right end of the heater.

- There are safety over-temperature limiting devices inside the heater. These safety devices are there to turn off the heater automatically in the event of an over-temperature condition. These devices are not to be tampered with or disconnected from the electrical system. If the heater is installed correctly and wired to the correct voltage, these devices should never operate to turn off the heater. If this device is cycling the heater off and on, turn off power to the heater and have the heater serviced by qualified service personnel.

MAINTENANCE

- The user can perform periodic cleaning of the outer cabinet. All other servicing is to be done by qualified service personnel.
- The finish of the heater may be cleaned with a slightly damp rag if desired.
- Because of the convection heating principle which depends on air circulation through the heater, dust can collect between the fins. The heater should be cleaned annually for maximum efficiency.
- To remove the front cover, remove attachment screws at the bottom of the front cover.

⚠ WARNING ⚠

BEFORE REMOVING THE FRONT COVER FOR SERVICING OR CLEANING, BE SURE POWER HAS BEEN TURNED OFF AT THE CIRCUIT BREAKER PANEL AND THE HEATER ELEMENT IS COOL.

- A vacuum cleaner with a brush attachment may be used for cleaning of the element fins.
- Replace front cover, (using the screws provided), restore power and check heater for proper operation.

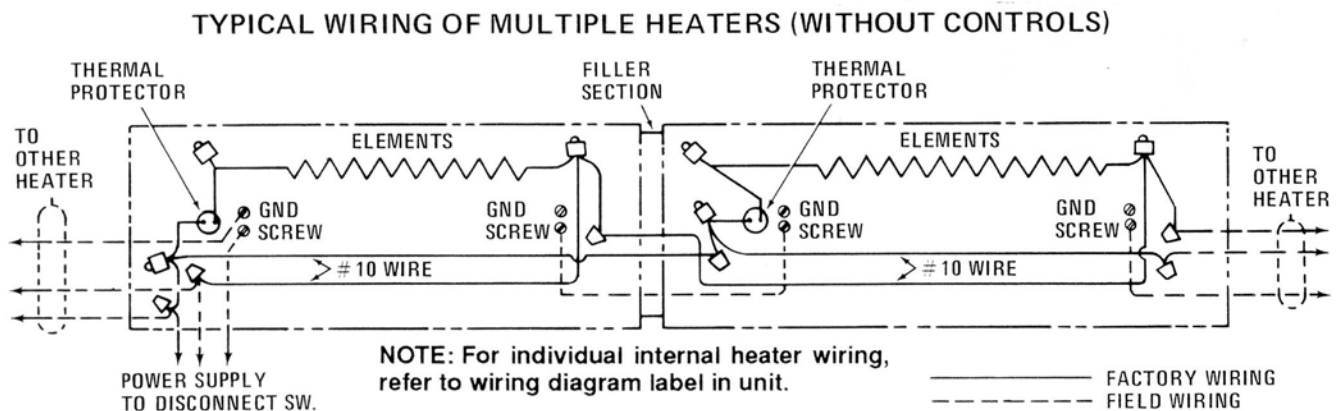


Figure 7 - Wiring Diagram

LIMITED WARRANTY

All products manufactured by ASPEQ Heating Group are warranted against defects in workmanship and materials for one year from the date of purchase, except heating elements which are warranted against defects in workmanship and materials for five years from date of purchase. This warranty does not apply to damage from accident, misuse, or alteration; nor where the connected voltage is more than 5% above the nameplate voltage; nor to equipment improperly installed or wired or maintained in violation of the product's installation instructions. This warranty does not apply to refurbished products. All claims for warranty work must be accompanied by proof of the date of purchase.

The customer shall be responsible for all costs incurred in the removal or reinstallation of products, including labor costs, and shipping costs incurred to return products to ASPEQ Heating Group. Within the limitations of this warranty, inoperative units should be returned to ASPEQ Heating Group, and we will repair or replace, at our option, at no charge to you with return freight paid by ASPEQ. It is agreed that such repair or replacement is the exclusive remedy available from ASPEQ Heating Group.

THE ABOVE WARRANTIES ARE IN LIEU OF ALL OTHER WARRANTIES EXPRESSED OR IMPLIED, AND ALL IMPLIED WARRANTIES OF MERCHANTABILITY AND FITNESS FOR A PARTICULAR PURPOSE WHICH EXCEED THE AFORESAID EXPRESSED WARRANTIES ARE HEREBY DISCLAIMED AND EXCLUDED FROM THIS AGREEMENT. ASPEQ HEATING GROUP SHALL NOT BE LIABLE FOR CONSEQUENTIAL DAMAGES ARISING WITH RESPECT TO THE PRODUCT, WHETHER BASED UPON NEGLIGENCE, TORT, STRICT LIABILITY, OR CONTRACT.

Some states do not allow the exclusion or limitation of incidental or consequential damages, so the above exclusion or limitation may not apply to you. This warranty gives you specific legal rights, and you may have other rights which vary from state to state.

Contact ASPEQ Heating Group in St Louis, MO, at 314-333-5550. Merchandise returned to the factory must be accompanied by a return authorization and service identification tag, both available from ASPEQ Heating Group. When requesting return authorization, include all catalog numbers shown on the products.

HOW TO OBTAIN WARRANTY SERVICE AND WARRANTY PARTS PLUS GENERAL INFORMATION

1. Warranty Service or Parts **314-333-5550**
2. General Product Information **www.aspeqheating.com**

Note: When obtaining service always have the following:

1. Model number of the product
2. Date of manufacture
3. Part number or description

ASPEQ
HEATING GROUP
St Louis, MO 63144 USA