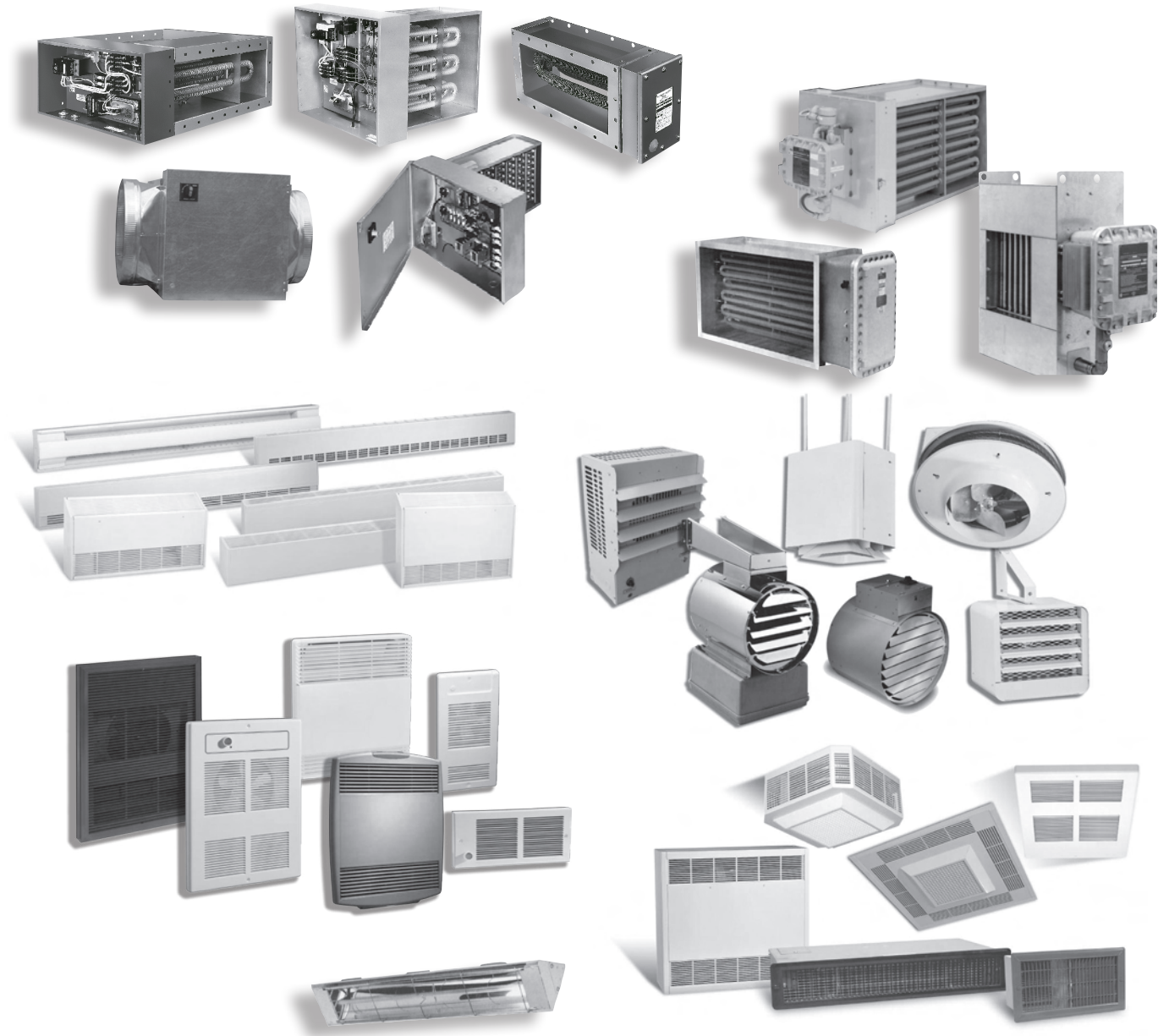


commercial heating products



HEATREX

electric heating and controls

DUCT HEATERS

UL Listed or CSA Approved self-contained electric duct heaters. Standard and custom slip-in, flanged and patented slip-and-drive mountings are available. Wide selection of frame sizes, KW ratings, required safety devices and electronic controls built in as part of a standard package. HEATREX offers a full line of open coil and finned tubular designs for air handling equipment.

Open Coil Duct Heaters

- Suitable for most standard HVAC ducted systems.
- Over 30 million Type HUA-Slip-In and HUP-Flanged designs available for 72 hour shipment.
- High quality grade A nickel-chromium heating element wire.
- Heavy gauge sheet metal frame and enclosure.
- UL Listed round duct construction.

Finned Tubular Duct Heaters

- Used in demanding applications; wet, dirty or dusty locations.
- Stainless steel elements are standard with all finned tubular duct heaters.
- Rugged construction eliminates hazard of electric shock.
- Stainless steel heater frame and terminal enclosure available for wet corrosive applications.

Heaters for Air Handlers and Variable Air Volume (VAV) Units

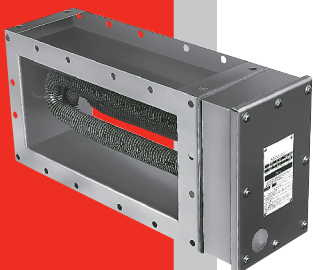
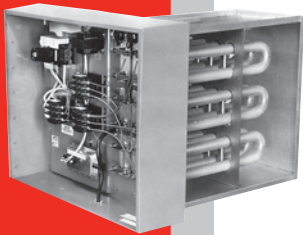
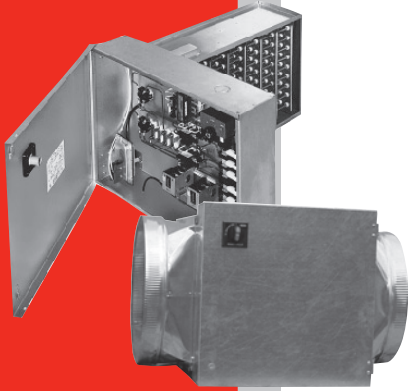
- Easy installation at OEM factory or in the field.
- Modular or multizone construction.
- Pressure plates.

Marine Duty Duct Heaters

- Complete control packages standard.
- Construction I/A/W 46 CFR, part 111.87 is available.
- Flange (standard) or slip-in mounting available at no extra charge.
- UL and ABS Approved.
- Heavy duty construction for shipboard use.
- Custom sizes available.

Mil-Spec Duct Heaters

- MIL-H-22594A (SH) compliance for all sizes.
- Support for all current and many previous Mil-Spec sizes.
- NSN and APL (CID) numbers available.
- Compliance with MIL-PRF-22594-B.



UNIT HEATERS AND COMFORT HEATERS

HEATREX offers a wide range of unit heaters and comfort heaters for both commercial and industrial applications. A full line of built-in controls and remote thermostats are available with these products to complete the package.

234 Series Washdown and Corrosion-Resistant Unit Heaters

- Stainless steel construction with nonmetallic NEMA 4X enclosure, which houses the element terminals and built-in controls.
- Comes complete with a stainless steel bracket that can be used for wall or ceiling mounting.
- Single-point connection for all standard voltages up to 600 VAC, 3-phase, 60 Hz.
- Ratings up to 47 kW.
- Available in one or two stages.
- UL/cUL Listed and ABS Approved.

238 Series Industrial Unit Heaters

- Units feature stainless steel finned tubular heating elements, built-in controls, adjustable discharge louvers and bracket for ceiling or wall mounting.
- Ratings up to 38 kW.
- High CFM capacities and throws up to 50 feet available.
- cULus Listed.

240 Series Unit Heater

- 50 standard models with ratings up to 50 kW.
- Wide variety of factory built-in or field installed options.
- Horizontal or vertical discharge mounting.
- cULus Listed.

Other Forced-Air Heaters

- Cabinet unit heaters range from 2,000 to 24,000 watts. Units may be mounted on the floor, wall or ceiling, and can be recessed for wall or ceiling applications. Full line of optional features are available.
- Commercial and architectural wall heaters available from 2,000 to 12,000 watts.
- Heavy-duty commercial unit heaters, offered to 60 kW, can be mounted horizontally or vertically. Each heater is furnished with both ceiling and wall mounting brackets for easy installation.
- Ceiling heaters for surface, T-Bar or recessed mounting with voltage up to 480 VAC, 3-Phase and up to 10,000 watts.

Baseboard Heaters

- Heavy-duty baseboard heaters for commercial, architectural or industrial applications. Available in flat or sloped top design with a durable epoxy/polyester powder paint finish on a heavy gauge aluminum and steel cabinet. Sizes range from 300 to 4,000 watts.
- Stainless steel elements.
- Architectural convectors provide large amounts of heat without the fan noise associated with unit heaters. Can be floor or wall mounted, and fully recessed with a front warm air outlet.

Infrared Comfort Heaters and Radiant Ceiling Panels

- Designed for spot heating in a small indoor or outdoor area by radiation.
- Does not noticeably change air temperatures in the larger surrounding area.
- Infrared heaters can be ceiling or wall mounted.



EXPLOSION-PROOF HEATERS

HEATREX offers a wide range of heating options for hazardous environments.

Explosion-proof Duct Heaters

- Two Designs: 227 Series, and 220 Series with ratings up to 750 kW, 600 VAC to meet NEC Divisions 1 & 2 locations.
- Custom built to fit new or existing systems.
- Standard flanged or optional slip-in construction available.
- SCR control.
- 227 Series designs are Factory Mutual (FM), CSA Approval for Classes I & II Divisions, 1 & 2, Groups B, C, D, F & G, temperature code T3C 320°F (160° C).

233 Series Explosion-proof Unit Heaters

- 233 Series has the industry's lowest ignition temperature code rating of T3C for Classes I & II, Divisions 1 & 2, Groups C, D, E, F & G, Factory Mutual (FM) and CSA Approved. 316 STAINLESS STEEL and Heresite® corrosion-resistant constructions are optional. With cataloged listing up to 30 kW, 600 VAC, 3-phase, 50/60 Hz with single point electrical connection.
- Small economical 236 Series unit heater for Class I, Divisions 1 and 2, Group D, with Factory Mutual (FM), CSA and ABS Approvals. STAINLESS STEEL corrosion-resistant is standard with optional dirty-duty construction available. Ratings up to 12 kW, 600 VAC, 3-phase.

Explosion-proof Convection Heaters

- Class I & II, Divisions 1 & 2, Groups B, C, D, E, F & G.
- Ratings from 500 to 9,500 watts.
- Sloped-top cabinet design.
- Available with built-in controls.
- NEMA 3 construction for wet locations is available.
- Factory Mutual (FM), CSA, ABS Approved.

Electronic Controls

Heatrex offers an extensive line of standard and custom electronic controls including:

- SCR Power Controllers
- Electronic Sequencers
- Temperature/Process Controls



314-333-5500
www.heatrex.com