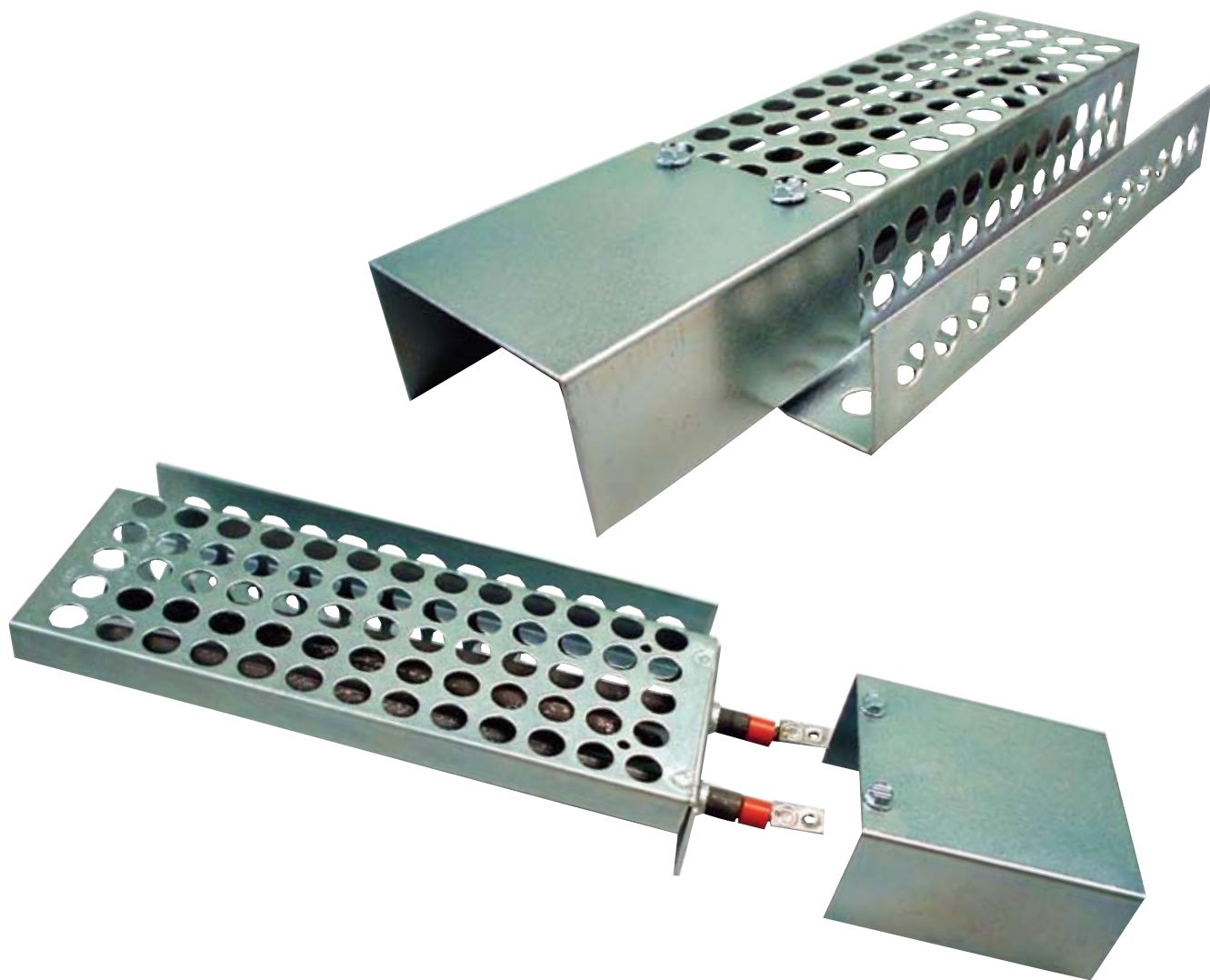


# *Switchgear Space Heaters*



## Type 1

(U.L. recognized component)

### Applications

HEATREX Switchgear Space Heaters are designed to maintain temperature and minimize moisture inside electrical and mechanical equipment enclosures. They conveniently replace strip heaters or other less efficient heating devices.

### Standard Features

- Alloy sheathed tubular element
- Grade "A" magnesium-oxide
- Highest quality nickel chromium resistance wire
- Perforated plated steel shroud
- Multitude of 3/8" diameter mounting holes on Type 1

### Optional Features

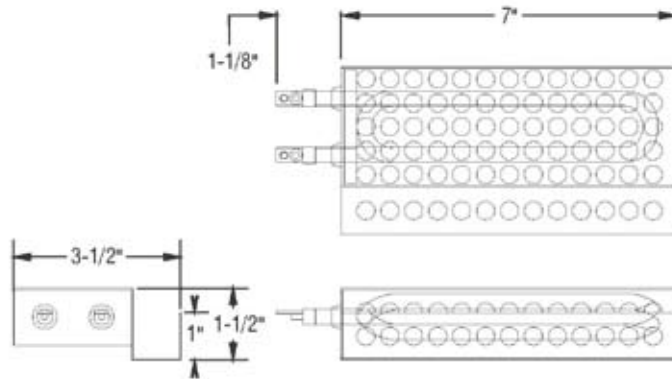
- Custom wattages/voltages
- Custom dimensions/sizes
- Special moisture resistant vulcanized terminal with lead wire
- Custom mounting brackets and shrouds

### Benefits

- Long life element
- Easy installation
- Less expensive than strip heaters
- Corrosion resistant mounting bracket offers maximum protection from accidental contact of heating element while allowing continuous circulation of air

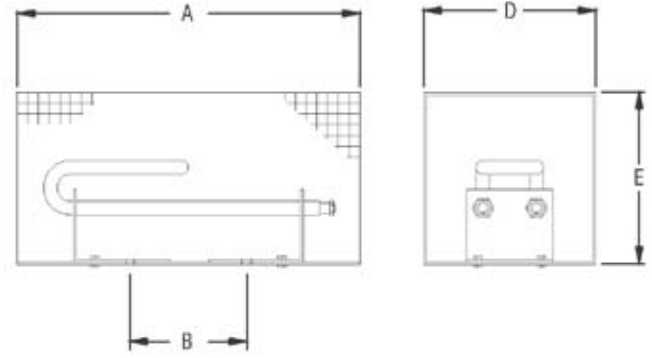
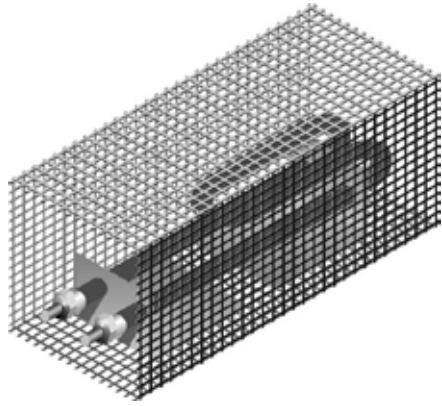
### Installation

Switchgear space heaters can be mounted to equipment cabinets utilizing the perforated holes. Terminals on Type 1 have #8-32 screw tabs for convenient electrical connections. Type 2 and Type 3 heaters are equipped with mounting tabs and #10-32 threaded "stud" type electrical terminals.



Watts	Volts	Catalog Number
100	125	276-1
100	250	276-2
125	120	276-19
125	240	276-27
150	120	276-24
150	208	276-16
150	240	276-17
250	125	276-3
250	250	276-4
300	125	276-7
300	250	276-8
350	125	276-5
350	250	276-6
375	125	276-10
375	250	276-11

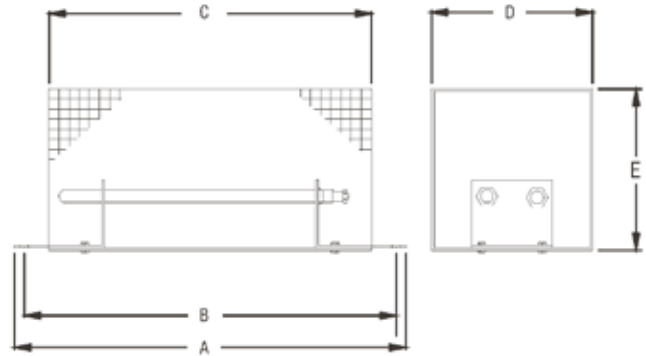
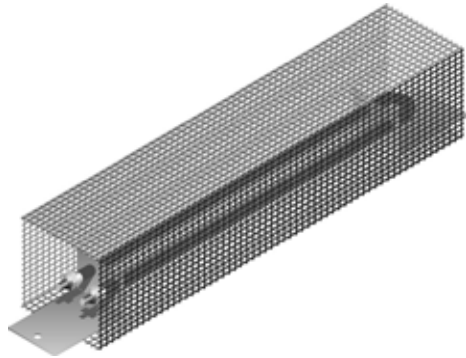
## Type 2



Watts	Volts	Catalog Number	A In. (cm)	B In. (cm)	D In. (cm)	E In. (cm)
125	120	565015	8 (20.32)	4-3/4 (12.065)	4 (10.16)	4 (10.16)
125	240	565013	8 (20.32)	4-3/4 (12.065)	4 (10.16)	4 (10.16)
350	120	565048	8 (20.32)	4-3/4 (12.065)	4 (10.16)	4 (10.16)
350	240	565049	8 (20.32)	4-3/4 (12.065)	4 (10.16)	4 (10.16)

Standard mounting holes 7/32" ("B" dimension)

## Type 3

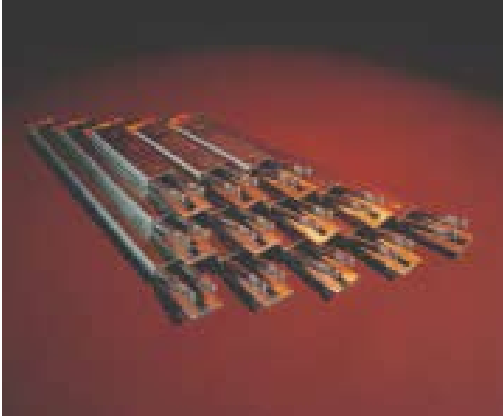


Watts	Volts	Catalog Number	A In. (cm)	B In. (cm)	C In. (cm)	D In. (cm)	E In. (cm)
350	125	565018	16-5/8 (36.512)	16-1/8 (40.322)	15 (38.1)	4 (10.16)	4 (10.16)
350	250	565019	16-5/8 (36.512)	16-1/8 (40.322)	15 (38.1)	4 (10.16)	4 (10.16)
350	250	565046	16-5/8 (36.512)	16-1/8 (40.322)	15 (38.1)	3 (7.62)	3 (7.62)
350	125	565047	16-5/8 (36.512)	16-1/8 (40.322)	15 (38.1)	3 (7.62)	3 (7.62)
175	120	565050	16-5/8 (36.512)	16-1/8 (40.322)	15 (38.1)	4 (10.16)	4 (10.16)

Standard mounting holes 7/32" ("B" dimension)

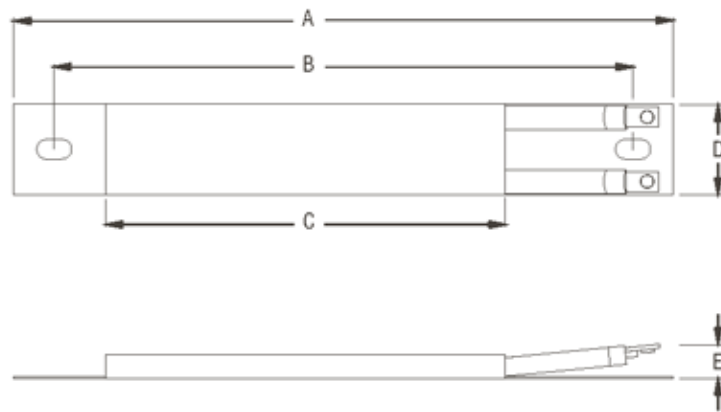
Other wattage/voltages and dimensions available. please consult factory.

# Additional heaters from HEATREX



## Tubular Strip Heaters

In addition to switch gear space heaters, HEATREX manufactures a complete line of tubular strip heaters. Both standard and custom designs are available. Tubular strip heaters provide the advantages of a traditional tubular heating element and in most cases, the same "low profile" mounting dimensions of strip heaters.



Watts	Volts	Catalog Number	A In. (cm)	B In. (cm)	C In. (cm)	D In. (cm)	E In. (cm)
160	120	568007	12 (30.48)	11 (27.94)	8-1/8 (20.002)	1-1/2 (3.81)	1 (2.54)
160	240	568008	12 (30.48)	11 (27.94)	8-1/8 (20.002)	1-1/2 (3.81)	1 (2.54)
300	120	568009	18 (45.72)	17 (43.18)	14-1/8 (35.242)	1-1/2 (3.81)	1 (2.54)
300	240	568010	18 (45.72)	17 (43.18)	14-1/8 (35.242)	1-1/2 (3.81)	1 (2.54)
450	120	568011	24 (60.96)	23 (58.42)	20-1/8 (50.482)	1-1/2 (3.81)	1 (2.54)
450	240	568012	24 (60.96)	23 (58.42)	20-1/8 (50.482)	1-1/2 (3.81)	1 (2.54)



Phone: 814-724-1800  
[www.heatrex.com](http://www.heatrex.com)