

# Tank and Basin Heaters

## Cooling Tower Heaters

**Cooling Tower Heaters** are long cartridge heaters designed with a conservative 25 W/Sq. In. maximum watt density. These units provide a long “gentle” heat covering a majority of the tank or vessel. They are used primarily in below grade concrete sumps, for cooling towers or to heat viscous fluids. The heaters can be specified with through-the-wall or over-the-side construction in 3/4” NPT (Series 761) or 1-1/4” NPT (Series 762).

**Over-the-Side Heaters** eliminate the need for cutting a hole in the basin. Internal wiring runs from the horizontal heater elements through a vertical riser and extension arm with an outlet box located over the side of the basin.

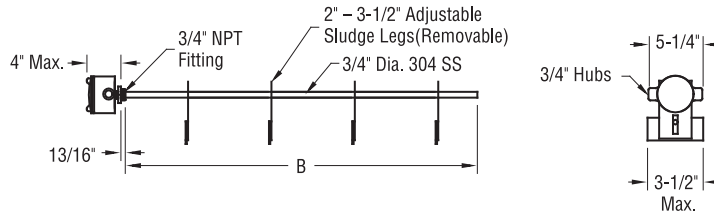
**Adjustable Sludge Legs** are furnished on all heaters. Located on five foot centers to keep the element in place even in high water velocities, these legs are adjustable for heights between 2” and 3-1/2”.

**Liquidproof/Explosion-Resistant Outlet Boxes** are furnished on all heaters.

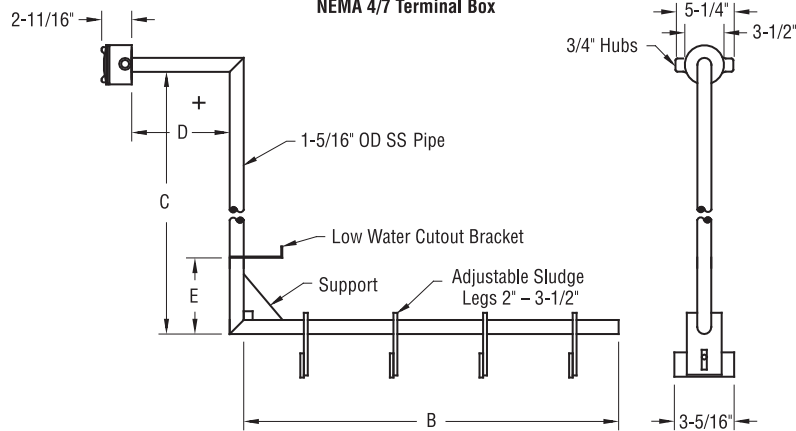
### Through-the-Wall Heaters

Series	NPT (Inches)	DIA (Inches)
HX-761	3/4	3/4
HX-762	1-1/4	1-5/16

**Through-the-Wall Cooling Tower Heater  
NEMA 4/7 Terminal Box**



**Over-the-Side Cooling Tower Heater  
NEMA 4/7 Terminal Box**



Note: Dimensions B, C, D and E (if required) must be specified when ordering.

# Tank and Basin Heaters

## Cooling Tower Heaters (continued)

761 Series (3/4" NPT) NEMA 4 Box		
B Dimension (Inches)	Catalog Number	Maximum KW
24	HX-761U024	1.2
30	HX-761U030	1.6
36	HX-761U036	2.0
42	HX-761U042	2.4
48	HX-761U048	2.8
54	HX-761U054	3.2
60	HX-761U060	3.6
66	HX-7617066	4.0
72	HX-761U072	4.4
78	HX-761U078	4.8
84	HX-761U084	5.2
90	HX-761U090	5.6
96	HX-761U096	6.0
102	HX-761U102	6.4
108	HX-761U108	6.8
114	HX-761U114	7.2
120	HX-761U120	7.6
126	HX-761U126	8.0
132	HX-761U132	8.4
138	HX-761U138	8.8
144	HX-761U144	9.2
150	HX-761U150	9.6
156	HX-761U156	10.0
162	HX-761U162	10.4
168	HX-761U168	10.8

762 Series (1-1/4" NPT) NEMA 4 Box		
B Dimension (Inches)	Catalog Number	Maximum KW
24	HX-762U024	2.2
30	HX-762U030	2.8
36	HX-762U036	3.4
42	HX-762U042	4.0
48	HX-762U048	4.6
54	HX-762U054	5.2
60	HX-762U060	5.8
66	HX-762U066	6.4
72	HX-762U072	7.0
78	HX-762U078	7.6
84	HX-762U084	8.3
90	HX-762U090	9.0
96	HX-762U096	9.7
102	HX-762U102	10.5
108	HX-762U108	11.3
114	HX-762U114	12.0
120	HX-762U120	12.7
126	HX-762U126	13.4
132	HX-762U132	14.1
138	HX-762U138	15.0
144	HX-762U144	16.0
150	HX-762U150	17.0
156	HX-762U156	18.0
162	HX-762U162	19.0
168	HX-762U168	20.0