

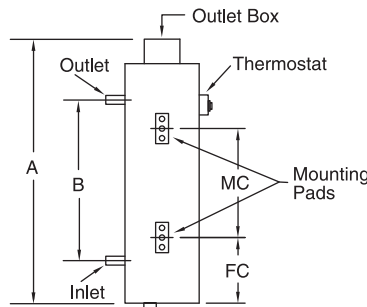
Circulation Heaters

Water Heater Listings

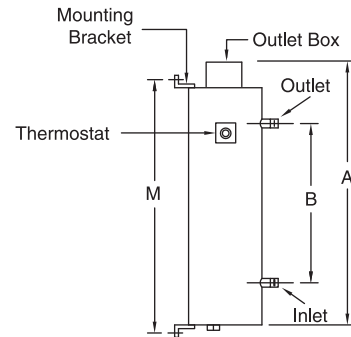
The Series HX-355 (50 W/In²) Heatrex circulation heaters are designed for heating water. These high quality Water Heaters include the following standard features:

- Copper sheathed .475" diameter heating elements
- Insulated steel vessel with a galvanized jacket
- NEMA Type 1 terminal enclosure
- Built-on thermostat, 60-250° F range
- Choice of mounting brackets or mounting pads
- Flange heaters have Class 150 steel flanges which meet ANSI B16.5 standards
- Rated 160 psi at 250° F

Pad Mounting



Bracket Mounting



Reference Dimensional Drawings on page 8. Specify Mounting Configuration per page 9.

| KW | Number Of Elements | Catalog Number** | | | Dimensions (Inches) | | | | | Weight (Lbs.) |
|--|--------------------|------------------|-----------------|----------------|---------------------|--------|----------|-------|---------|---------------|
| | | 240V/1 Phase | 240V/3 Phase | 480V/3 Phase | A | B | MC | FC | M | |
| 2-1/2" PIPE THREAD CONSTRUCTION, INCOLOY ELEMENTS, 12 W/IN² | | | | | | | | | | |
| 3 | 3 | HX-3552N003J01* | HX-3552N003K01* | | 21-1/4 | 9-3/8 | — | — | 18-1/2 | 30 |
| 4.5 | 3 | HX-3552N005J01* | HX-3552N005K01* | HX-3552N005U01 | 21-1/4 | 9-3/8 | — | — | 18-1/2 | 30 |
| 6 | 3 | HX-3552N006J01* | HX-3552N006K01* | HX-3552N006U01 | 34-3/8 | 22-1/2 | 16-1/2 | 5-5/8 | 31-5/8 | 40 |
| 7.5 | 3 | HX-3552N008J01* | HX-3552N008K01* | HX-3552N008U01 | 34-3/8 | 22-1/2 | 16-1/2 | 5-5/8 | 31-5/8 | 41 |
| 9 | 3 | HX-3552N009J01* | HX-3552N009K01* | HX-3552N009U01 | 34-3/8 | 22-1/2 | 16-1/2 | 5-5/8 | 31-5/8 | 41 |
| 3" -150 LB. FLANGE CONSTRUCTION, INCOLOY ELEMENTS, 12 W/IN² | | | | | | | | | | |
| 6 | 3 | HX-3553N006J01* | HX-3553N006K01* | HX-3553N006U01 | 34-1/4 | 22-1/2 | 16-1/2 | 4-1/8 | 30-1/4 | 65 |
| 9 | 3 | HX-3553N009J01* | HX-3553N009K01* | HX-3553N009U01 | 34-1/4 | 22-1/2 | 16-1/2 | 4-1/8 | 30-1/4 | 66 |
| 12 | 3 | HX-3553N012J03 | HX-3553N012K01* | HX-3553N012U01 | 46-1/4 | 34-1/2 | 26-1/2 | 4-1/8 | 42-1/4 | 81 |
| 15 | 3 | HX-3553N015J03 | HX-3553N015K01 | HX-3553N015U01 | 56-3/4 | 45 | 39 | 4-1/8 | 52-3/4 | 91 |
| 18 | 3 | HX-3553N018J03 | HX-3553N018K01 | HX-3553N018U01 | 56-3/4 | 45 | 39 | 4-1/8 | 52-3/4 | 93 |
| 5" -150 LB. FLANGE CONSTRUCTION, INCOLOY ELEMENTS, 12 W/IN² | | | | | | | | | | |
| 24 | 6 | HX-3554N024J03 | HX-3554N024K02 | HX-3554N024U01 | 43-1/2 | 30 | 25 | 4-3/4 | 38-7/8 | 135 |
| 30 | 6 | | HX-3554N030K02 | HX-3554N030U01 | 50-1/2 | 37 | 25 | 9 | 45-7/8 | 150 |
| 45 | 9 | | HX-3554N045K03 | HX-3554N045U03 | 50-1/2 | 37 | 25 | 9 | 45-7/8 | 157 |
| 63 | 9 | | | HX-3554N063U03 | 62 | 48-1/2 | 25 | 14 | 57-3/8 | 181 |
| 8" -150 LB. FLANGE CONSTRUCTION, INCOLOY ELEMENTS, 12 W/IN² | | | | | | | | | | |
| 72 | 18 | | HX-3555N072K06 | HX-3555N072U02 | 53-3/8 | 34-1/2 | 31 | 8-3/4 | 47-1/2 | 302 |
| 96 | 24 | | HX-3555N096K08 | HX-3555N096U04 | 53-3/8 | 34-1/2 | 31 | 8-3/4 | 47-1/2 | 312 |
| 126 | 18 | | | HX-3555N126U06 | 66-1/8 | 47-3/8 | 43-13/16 | 8-3/4 | 60-1/4 | 361 |
| 144 | 18 | | | HX-3555N144U06 | 75-5/8 | 56-7/8 | 53-5/16 | 8-3/4 | 69-3/4 | 396 |
| 180 | 18 | | | HX-3555N180U06 | 86-3/8 | 67-1/2 | 64 | 8-3/4 | 80-1/2 | 443 |
| 240 | 24 | | | HX-3555N240U08 | 86-3/8 | 67-1/2 | 64 | 8-3/4 | 80-1/2 | 466 |
| 12" -150 LB. FLANGE CONSTRUCTION, INCOLOY ELEMENTS, 12 W/IN² | | | | | | | | | | |
| 250 | 42 | | | HX-3557N250U07 | 64 | 40 | — | — | 58-9/16 | 748 |
| 300 | 48 | | | HX-3557N300U08 | 74 | 50 | — | — | 68-9/16 | 819 |
| 350 | 48 | | | HX-3557N350U16 | 84 | 60 | — | — | 78-9/16 | 889 |
| 400 | 48 | | | HX-3557N400U16 | 84 | 60 | — | — | 78-9/16 | 906 |
| 450 | 48 | | | HX-3557N450U16 | 84 | 60 | — | — | 78-9/16 | 924 |
| 500 | 48 | | | HX-3557N500U16 | 94 | 70 | — | — | 88-9/16 | 942 |
| 16" PIPE THREAD CONSTRUCTION, INCOLOY ELEMENTS, 20 W/IN² | | | | | | | | | | |
| 500 | 72 | | | HX-3558N500U24 | 73-1/2 | 48 | — | — | 67-7/8 | 1110 |
| 600 | 72 | | | HX-3558N600U24 | 83-1/2 | 58 | — | — | 77-7/8 | 1210 |
| 700 | 72 | | | HX-3558N700U24 | 93-1/2 | 68 | — | — | 87-7/8 | 1284 |
| 800 | 72 | | | HX-3558N800U24 | 101-1/2 | 76 | — | — | 95-7/8 | 1399 |

* Indicates factory wired, built-on load carrying thermostat. All other built-on thermostats are pilot duty only. Last two digits of catalog number indicate number of heater circuits.

** If any special features are added to a standard heater, the part number will change to a 350-Series number. This part number is assigned after an order is placed.